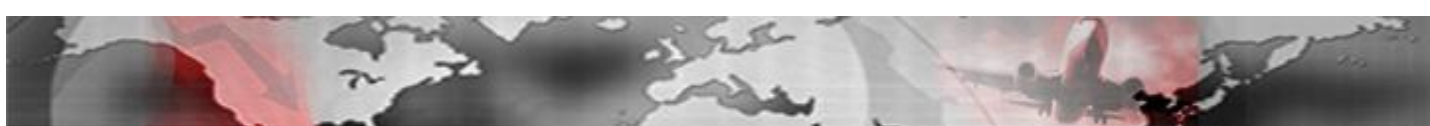


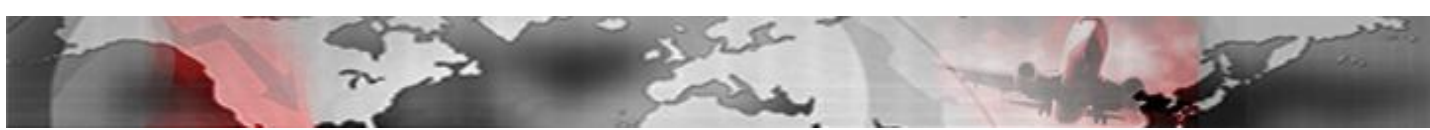
Revenue & Related



System Total Operating Revenue

(\$ Billions)

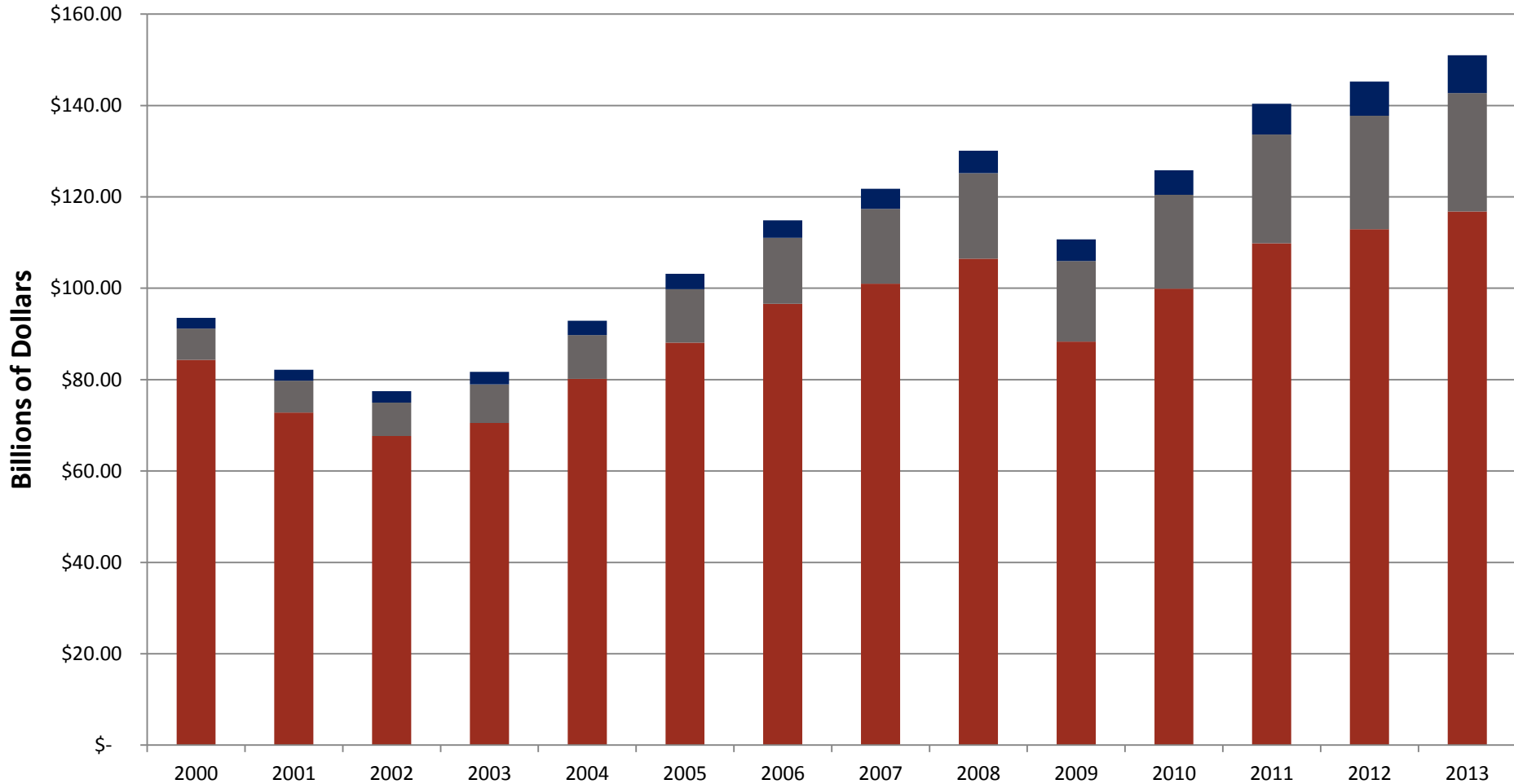
	2000	2001	2002	2003	2004	2005	2006	2007	2008	2009	2010	2011	2012	2013
American	\$ 18.12	\$ 15.64	\$ 15.87	\$ 17.40	\$ 18.61	\$ 20.66	\$ 22.49	\$ 22.83	\$ 23.70	\$ 19.90	\$ 22.15	\$ 23.96	\$ 24.83	\$ 25.76
Continental	\$ 9.13	\$ 7.97	\$ 7.35	\$ 7.33	\$ 9.85	\$ 11.11	\$ 13.01	\$ 14.11	\$ 15.03	\$ 12.36	\$ 14.01	\$ 16.17	\$ -	\$ -
Delta	\$ 15.32	\$ 13.21	\$ 12.41	\$ 14.20	\$ 15.15	\$ 16.11	\$ 17.34	\$ 19.24	\$ 20.97	\$ 18.05	\$ 31.89	\$ 35.23	\$ 36.81	\$ 37.82
Northwest	\$ 10.96	\$ 9.59	\$ 9.15	\$ 9.18	\$ 11.27	\$ 12.32	\$ 12.55	\$ 12.73	\$ 14.10	\$ 10.86	\$ -	\$ -	\$ -	\$ -
United	\$ 19.33	\$ 16.09	\$ 13.92	\$ 13.40	\$ 15.70	\$ 17.30	\$ 19.33	\$ 20.05	\$ 20.24	\$ 16.36	\$ 19.68	\$ 21.16	\$ 37.16	\$ 38.29
US Airways	\$ 9.18	\$ 8.25	\$ 6.91	\$ 6.76	\$ 7.07	\$ 7.21	\$ 11.85	\$ 12.05	\$ 12.46	\$ 10.78	\$ 12.20	\$ 13.34	\$ 14.12	\$ 14.94
America West	\$ 2.31	\$ 2.04	\$ 2.02	\$ 2.22	\$ 2.48	\$ 3.40	\$ -	\$ -	\$ -	\$ -	\$ -	\$ -	\$ -	\$ -
--sub Network	\$ 84.35	\$ 72.79	\$ 67.64	\$ 70.51	\$ 80.13	\$ 88.11	\$ 96.58	\$ 101.02	\$ 106.49	\$ 88.31	\$ 99.93	\$ 109.86	\$ 112.92	\$ 116.80
Southwest	\$ 5.65	\$ 5.56	\$ 5.52	\$ 5.94	\$ 6.53	\$ 7.58	\$ 9.09	\$ 9.86	\$ 11.02	\$ 10.35	\$ 12.10	\$ 13.65	\$ 17.09	\$ 17.70
jetBlue	\$ 0.11	\$ 0.32	\$ 0.64	\$ 1.00	\$ 1.27	\$ 1.70	\$ 2.36	\$ 2.84	\$ 3.39	\$ 3.29	\$ 3.78	\$ 4.51	\$ 4.98	\$ 5.44
AirTran	\$ 0.62	\$ 0.67	\$ 0.73	\$ 0.92	\$ 1.04	\$ 1.45	\$ 1.89	\$ 2.31	\$ 2.55	\$ 2.34	\$ 2.62	\$ 2.94	\$ -	\$ -
Frontier	\$ 0.45	\$ 0.45	\$ 0.46	\$ 0.59	\$ 0.79	\$ 0.96	\$ 1.13	\$ 1.33	\$ 1.37	\$ 1.11	\$ 1.32	\$ 1.66	\$ 1.43	\$ 1.35
Virgin America	\$ -	\$ -	\$ -	\$ -	\$ -	\$ -	\$ -	\$ 0.02	\$ 0.37	\$ 0.55	\$ 0.72	\$ 1.04	\$ 1.33	\$ 1.42
-- sub LCC	\$ 6.83	\$ 6.99	\$ 7.36	\$ 8.44	\$ 9.62	\$ 11.70	\$ 14.47	\$ 16.36	\$ 18.71	\$ 17.64	\$ 20.55	\$ 23.80	\$ 24.84	\$ 25.91
Alaska	\$ 1.76	\$ 1.76	\$ 1.83	\$ 2.03	\$ 2.24	\$ 2.42	\$ 2.69	\$ 3.08	\$ 3.22	\$ 3.01	\$ 3.43	\$ 4.31	\$ 4.65	\$ 5.15
Hawaiian	\$ 0.61	\$ 0.61	\$ 0.63	\$ 0.71	\$ 0.78	\$ 0.82	\$ 0.88	\$ 0.98	\$ 1.21	\$ 1.18	\$ 1.31	\$ 1.65	\$ 1.96	\$ 2.16
Allegiant	\$ -	\$ -	\$ -	\$ -	\$ 0.10	\$ 0.13	\$ 0.23	\$ 0.34	\$ 0.48	\$ 0.54	\$ 0.64	\$ 0.75	\$ 0.87	\$ 0.96
-- sub Other	\$ 2.37	\$ 2.37	\$ 2.46	\$ 2.73	\$ 3.13	\$ 3.37	\$ 3.80	\$ 4.40	\$ 4.92	\$ 4.73	\$ 5.37	\$ 6.71	\$ 7.48	\$ 8.26
Total All Sectors	\$ 93.54	\$ 82.15	\$ 77.46	\$ 81.68	\$ 92.89	\$ 103.18	\$ 114.86	\$ 121.78	\$ 130.12	\$ 110.68	\$ 125.85	\$ 140.37	\$ 145.24	\$ 150.98
Total Industry	\$ 130.25	\$ 115.23	\$ 107.12	\$ 117.77	\$ 134.62	\$ 151.25	\$ 164.62	\$ 173.11	\$ 185.68	\$ 154.72	\$ 174.68	\$ 191.97	\$ 195.05	\$ 200.24

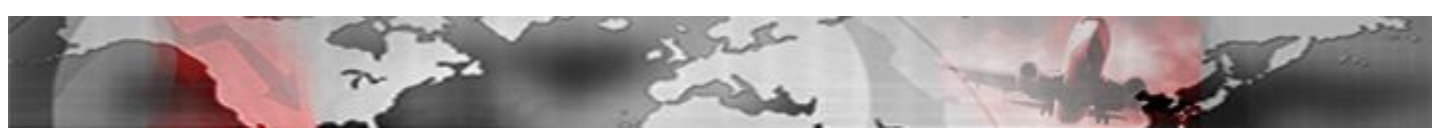


System Total Operating Revenue

(\$ Billions)

■ Network Carriers ■ LCCs ■ Other

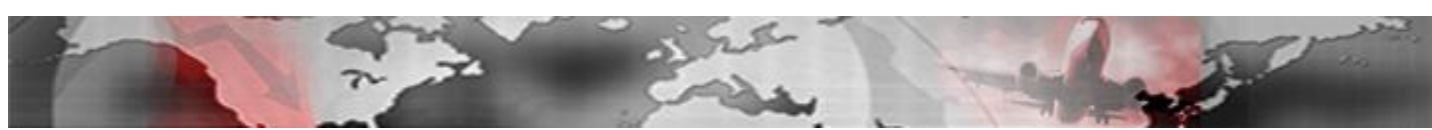




System Total Revenue (Ex Transport-Related) Per ASM

(cents per Available Seat Mile)

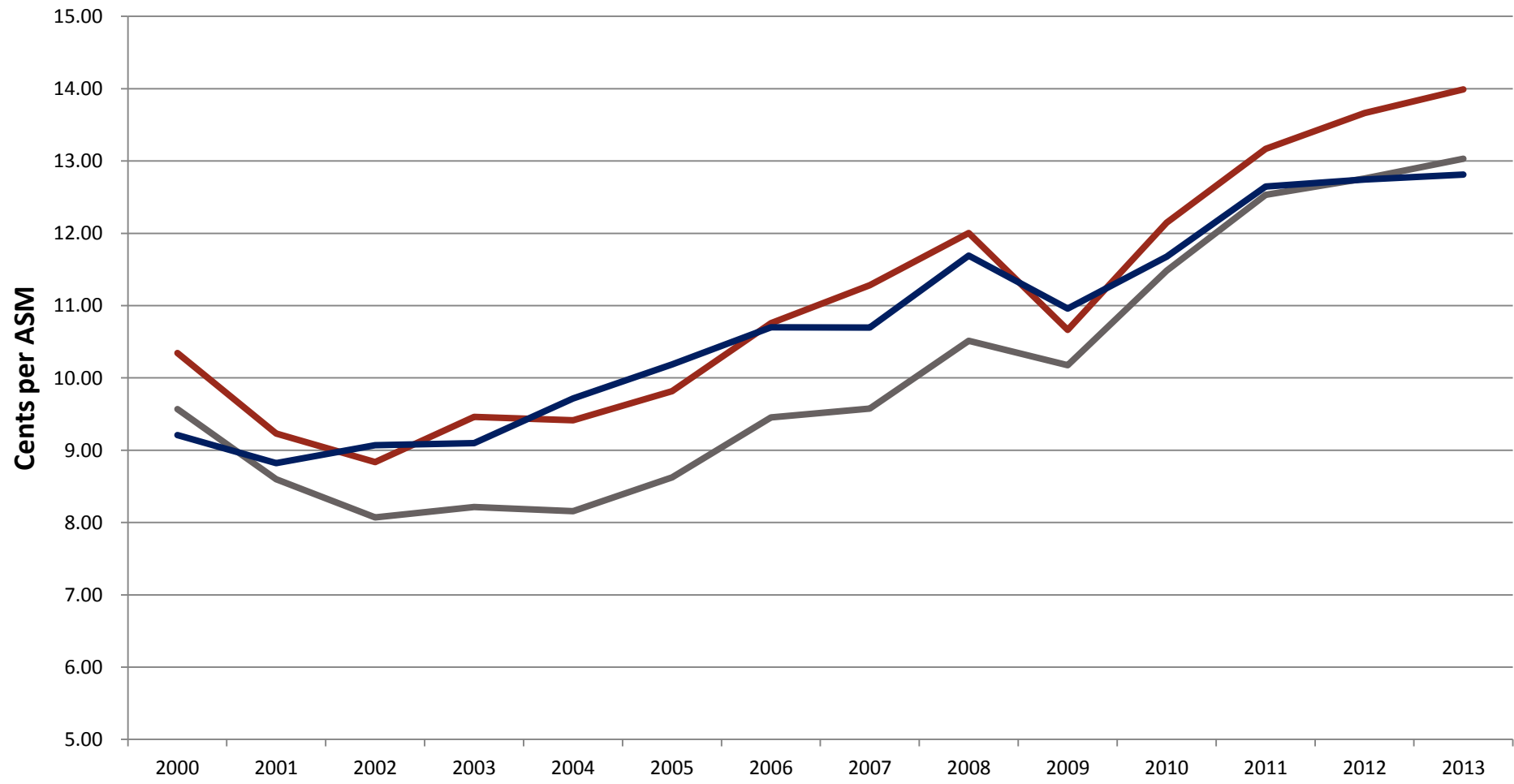
	2000	2001	2002	2003	2004	2005	2006	2007	2008	2009	2010	2011	2012	2013
American	10.72	9.69	8.77	9.11	9.08	9.89	10.86	11.26	11.90	10.95	12.11	12.84	13.47	13.83
Continental	10.13	9.29	9.04	9.27	9.28	9.79	10.54	11.03	11.75	10.34	11.73	12.95	-	-
Delta	10.04	8.96	8.83	10.95	9.91	9.26	10.07	10.99	12.04	10.93	12.39	13.57	14.48	14.90
Northwest	10.23	9.32	9.32	9.74	10.41	11.01	12.21	12.21	12.91	10.87	-	-	-	-
United	10.18	8.79	8.43	8.61	9.05	9.72	10.56	11.32	11.92	10.14	12.18	13.14	13.10	13.30
US Airways	11.83	10.36	9.80	10.13	9.92	9.96	17.25	15.35	11.64	10.72	12.03	13.10	13.49	13.83
America West	8.27	7.42	7.23	7.70	7.42	8.53	-	-	-	-	-	-	-	-
--sub Network	10.34	9.23	8.83	9.46	9.42	9.82	10.76	11.28	12.01	10.66	12.15	13.17	13.67	13.99
Southwest	9.41	8.46	7.98	8.24	8.46	8.87	9.78	9.87	10.64	10.52	12.26	13.12	13.29	13.52
jetBlue	7.63	7.50	7.67	7.22	6.60	7.00	8.04	8.54	10.29	9.85	10.40	11.56	11.96	12.23
AirTran	10.55	10.09	8.70	9.09	8.67	9.43	9.96	10.17	10.72	10.04	10.87	11.88	-	-
Frontier	11.11	9.49	8.91	8.67	8.16	9.20	9.53	9.27	10.48	9.53	10.79	13.56	12.04	12.13
Virgin America	-	-	-	-	-	-	-	2.21	8.21	8.07	9.36	10.40	10.52	11.41
-- sub LCC	9.57	8.60	8.07	8.22	8.16	8.62	9.45	9.58	10.52	10.17	11.48	12.53	12.76	13.03
Alaska	9.79	9.42	9.01	9.19	9.51	10.23	10.97	11.05	11.46	11.08	11.91	12.81	13.09	13.52
Hawaiian	7.99	7.51	9.47	9.59	10.52	10.46	10.73	10.41	12.46	11.76	12.54	13.40	13.10	12.57
Allegiant	-	-	-	-	8.69	8.31	8.33	9.11	11.29	8.93	9.27	10.48	10.67	10.61
-- sub Other	9.21	8.82	9.07	9.10	9.72	10.19	10.70	10.70	11.69	10.96	11.68	12.65	12.74	12.81
Total All Sectors	10.25	9.16	8.76	9.29	9.26	9.65	10.53	10.94	11.70	10.58	11.99	13.01	13.42	13.71

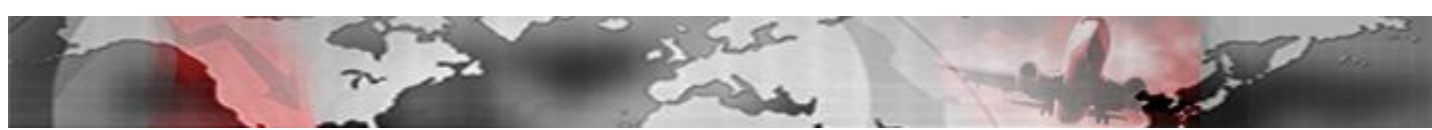


System Total Revenue (Ex Transport-Related) Per ASM

(cents per Available Seat Mile)

— Network Carriers — LCCs — Other

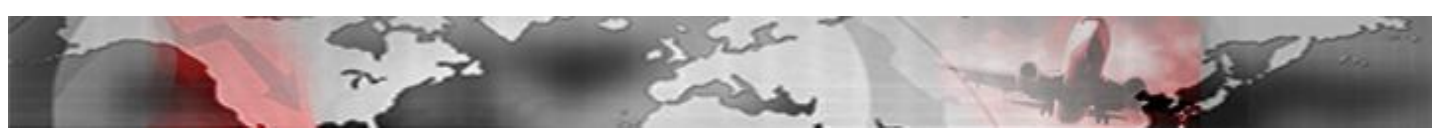




Passenger Revenue per Available Seat Mile (PRASM)

(cents per Available Seat Mile)

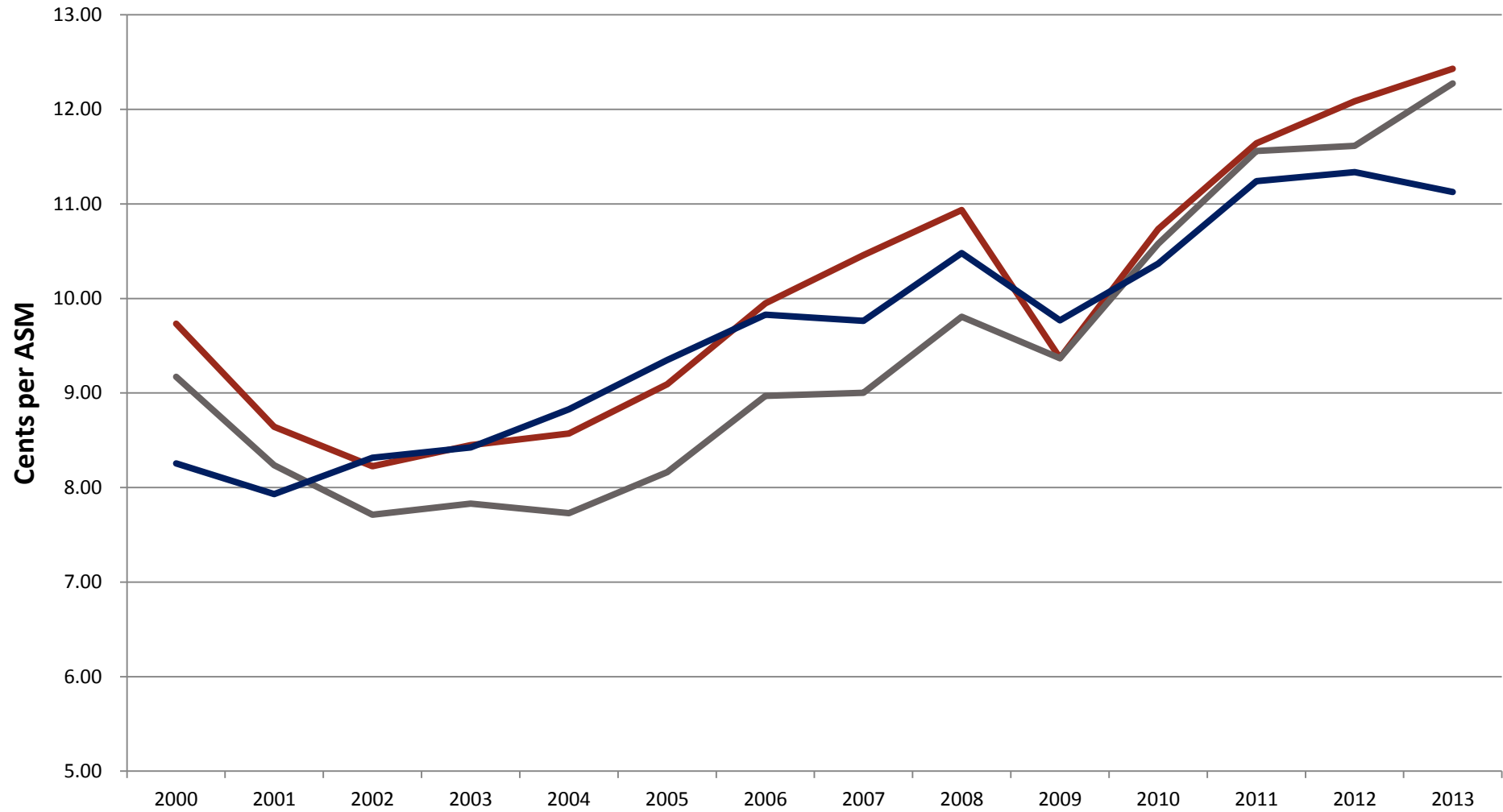
	2000	2001	2002	2003	2004	2005	2006	2007	2008	2009	2010	2011	2012	2013
American	10.17	9.19	8.37	8.62	8.61	9.41	10.25	10.65	11.14	9.90	10.93	11.62	12.27	12.67
Continental	9.62	8.81	8.53	8.62	8.75	9.27	9.94	10.45	11.05	9.39	10.62	11.75	-	-
Delta	9.60	8.40	8.15	8.53	8.33	8.48	9.30	9.99	10.67	9.14	10.57	11.50	12.16	12.63
Northwest	9.20	8.34	8.28	8.55	9.21	9.62	10.56	10.77	11.11	9.09	-	-	-	-
United	9.46	8.17	7.74	7.78	8.22	8.88	9.71	10.46	10.84	9.18	11.03	11.90	11.95	12.14
US Airways	11.34	9.85	9.26	9.55	9.35	9.44	16.37	14.57	10.75	9.27	10.44	11.52	11.91	12.21
America West	8.02	7.28	7.11	7.56	7.27	8.23	-	-	-	-	-	-	-	-
--sub Network	9.73	8.64	8.23	8.45	8.57	9.09	9.95	10.46	10.94	9.37	10.73	11.64	12.09	12.43
Southwest	9.00	8.07	7.58	7.80	7.94	8.31	9.21	9.19	9.88	9.74	11.28	12.11	12.05	12.81
jetBlue	7.41	7.29	7.47	7.05	6.44	6.83	7.78	8.19	9.66	9.18	9.81	10.95	11.35	11.60
AirTran	10.22	9.83	8.49	8.78	8.35	9.04	9.52	9.66	10.06	8.92	9.75	10.54	-	-
Frontier	10.72	9.16	8.58	8.27	7.82	8.77	9.07	8.84	9.91	8.75	9.86	12.32	9.81	10.48
Virgin America	-	-	-	-	-	-	-	1.69	7.59	7.35	8.60	9.67	9.76	10.49
-- sub LCC	9.17	8.24	7.71	7.83	7.73	8.16	8.97	9.00	9.81	9.37	10.58	11.56	11.61	12.27
Alaska	9.11	8.73	8.39	8.57	8.80	9.50	10.20	10.24	10.52	9.98	10.64	11.36	11.67	11.50
Hawaiian	6.39	6.16	8.30	8.69	9.69	9.67	9.90	9.64	11.62	10.72	11.38	12.31	12.03	11.53
Allegiant	-	-	-	-	3.94	5.69	6.46	6.94	7.73	7.10	7.59	8.64	8.65	8.85
-- sub Other	8.25	7.93	8.31	8.43	8.83	9.35	9.83	9.76	10.48	9.77	10.37	11.24	11.34	11.13
Total All Sectors	9.64	8.58	8.17	8.37	8.47	8.96	9.78	10.16	10.70	9.39	10.69	11.60	11.94	12.32

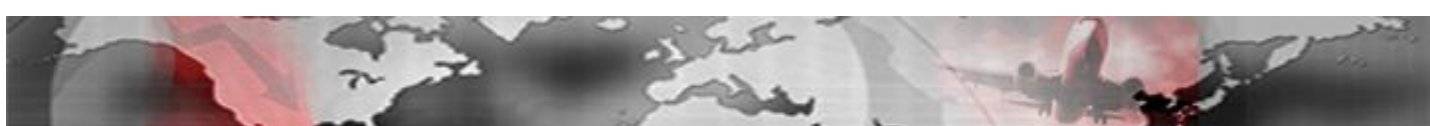


Passenger Revenue per Available Seat Mile (PRASM)

(cents per Available Seat Mile)

— Network Carriers — LCCs — Other

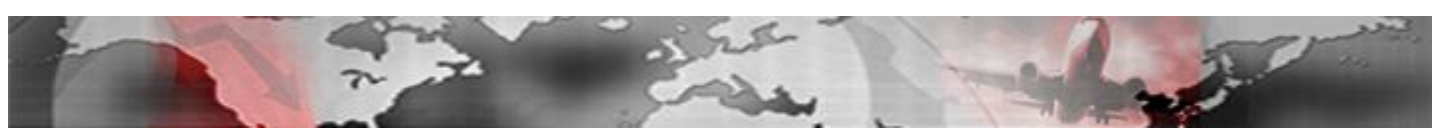




System Passenger Yield

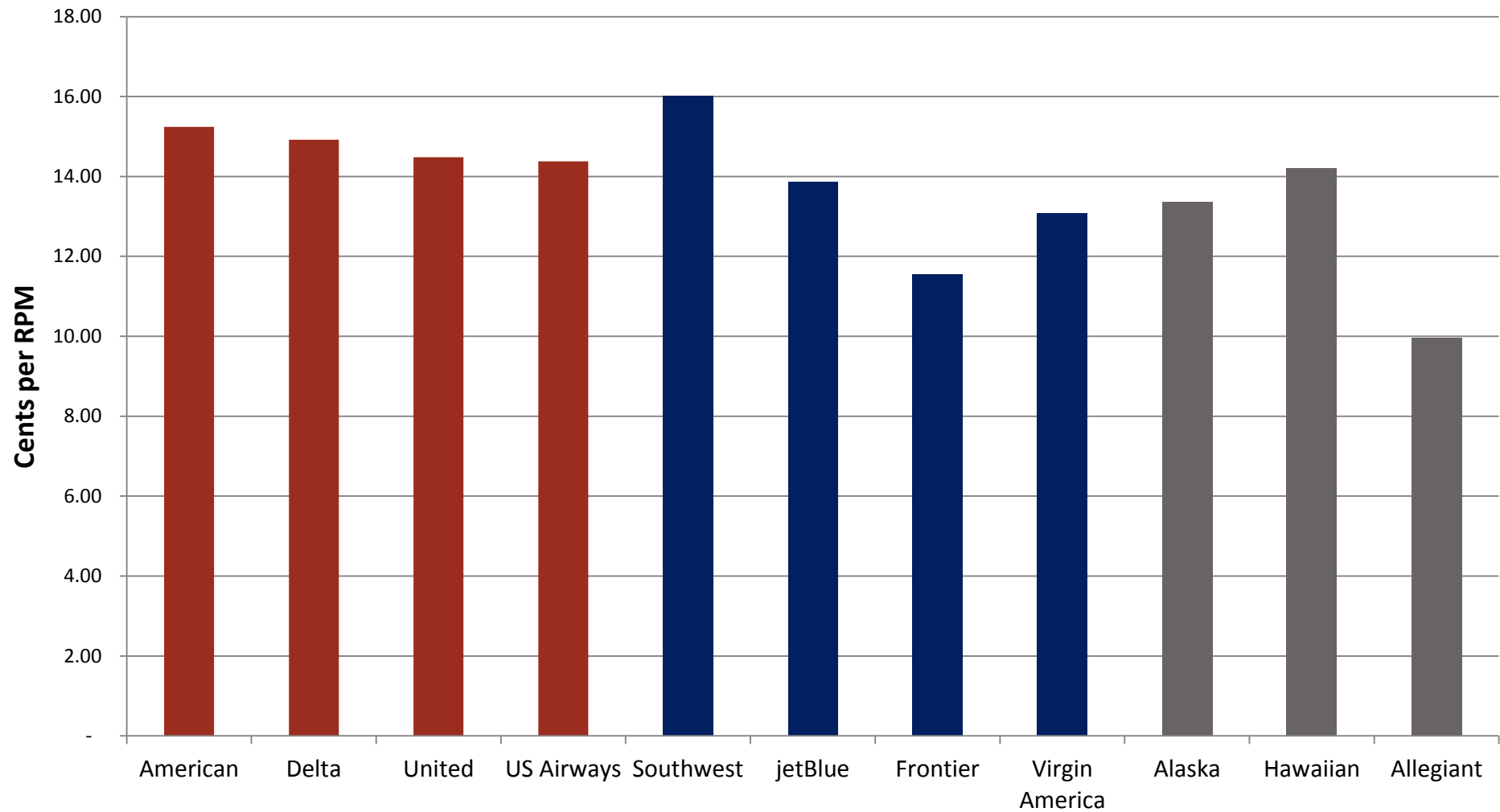
(cents per Revenue Passenger Mile)

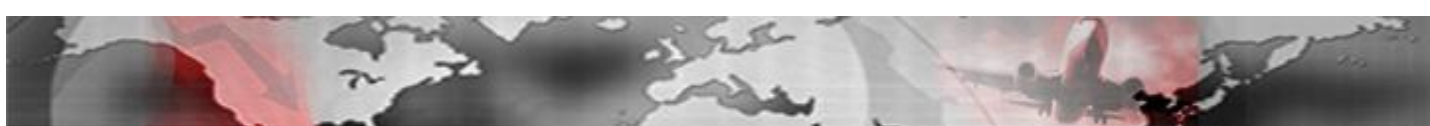
	2000	2001	2002	2003	2004	2005	2006	2007	2008	2009	2010	2011	2012	2013
American	14.04	13.24	11.84	11.83	11.51	11.98	12.80	13.06	13.83	12.27	13.34	14.17	14.81	15.24
Continental	12.93	12.18	11.49	11.38	11.25	11.62	12.19	12.72	13.61	11.40	12.66	14.37	-	-
Delta	13.11	12.16	11.26	11.49	11.01	10.94	11.79	12.34	13.02	11.12	12.62	13.90	14.40	14.92
Northwest	12.02	11.22	10.75	11.08	11.49	11.64	12.45	12.73	13.10	10.86	-	-	-	-
United	13.08	11.55	10.53	10.17	10.37	10.90	11.82	12.65	13.38	11.21	13.12	14.21	14.40	14.48
US Airways	16.10	14.30	13.03	13.04	12.47	12.57	20.92	18.21	13.16	11.33	12.68	13.76	14.16	14.38
America West	11.38	10.13	9.66	9.91	9.40	10.35	-	-	-	-	-	-	-	-
-sub Network	13.31	12.23	11.27	11.28	11.13	11.45	12.30	12.75	13.39	11.44	12.90	14.08	14.47	14.79
Southwest	12.78	11.86	11.51	11.68	11.43	11.75	12.61	12.66	13.88	12.82	14.23	14.99	15.01	16.01
jetBlue	10.20	9.47	9.02	8.38	7.77	8.06	9.54	10.23	12.03	11.49	12.05	13.29	13.55	13.87
AirTran	14.56	14.18	12.59	12.39	11.82	12.31	13.10	12.71	12.75	11.23	11.99	13.00	-	-
Frontier	16.68	15.81	14.50	12.00	10.65	11.07	11.39	11.24	12.11	10.79	11.80	14.15	11.04	11.55
Virgin America	-	-	-	-	-	-	-	2.72	9.95	8.92	10.55	11.88	12.32	13.07
- sub LCC	13.08	12.10	11.48	11.24	10.72	11.02	11.95	12.02	13.13	12.05	13.17	14.17	14.26	15.07
Alaska	13.16	12.77	12.32	12.31	12.08	12.52	13.32	13.44	13.62	12.58	12.77	13.34	13.47	13.36
Hawaiian	8.19	7.72	10.40	10.82	11.26	11.08	11.45	11.05	14.06	12.78	13.32	14.60	14.45	14.20
Allegiant	-	-	-	-	5.16	7.06	7.98	8.31	8.63	7.91	8.44	9.50	9.72	9.96
- sub Other	11.51	11.04	11.71	11.63	11.60	11.85	12.40	12.25	13.10	11.92	12.23	13.11	13.18	13.09
Total All Sectors	13.24	12.18	11.31	11.28	11.09	11.40	12.24	12.60	13.33	11.58	12.92	14.05	14.35	14.74



System Passenger Yield (2013)

(cents per Revenue Passenger Mile)

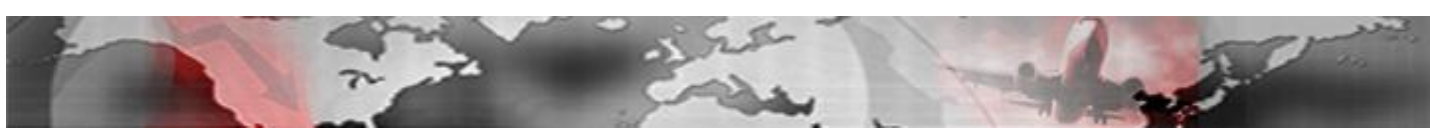




Stage-Length Adjusted System Passenger Yield

(cents per Revenue Passenger Mile)

	2000	2001	2002	2003	2004	2005	2006	2007	2008	2009	2010	2011	2012	2013
American	15.67	14.71	12.73	12.78	12.63	12.99	13.79	13.98	14.66	12.99	14.09	14.96	15.52	15.90
Continental	14.36	13.52	12.89	12.78	12.68	13.25	13.95	14.61	15.75	13.37	14.96	16.84	-	-
Delta	12.65	11.70	10.83	11.16	10.72	10.82	12.23	13.13	13.96	11.91	13.08	14.31	14.61	14.89
Northwest	11.88	11.05	10.49	10.57	10.84	11.08	11.81	12.19	12.92	10.94	-	-	-	-
United	14.47	12.84	11.85	11.37	11.57	12.38	13.25	14.16	15.00	12.70	15.15	16.69	17.05	17.24
US Airways	13.31	11.95	10.98	11.35	10.82	10.75	18.60	16.34	12.18	10.52	11.69	12.66	13.03	13.22
America West	11.02	9.80	9.58	9.91	9.46	10.18	-	-	-	-	-	-	-	-
-sub Network	13.74	12.66	11.64	11.67	11.56	11.92	12.92	13.44	14.20	12.19	13.75	15.01	15.39	15.71
Southwest	9.27	8.71	8.59	8.71	8.52	8.90	9.54	9.61	10.49	9.66	10.66	11.30	11.46	12.25
jetBlue	9.62	9.62	9.84	9.43	8.82	9.12	9.96	10.41	12.02	11.22	11.75	12.81	12.95	13.19
AirTran	11.00	10.65	9.56	9.55	9.18	9.67	10.15	10.13	10.31	9.09	9.72	10.57	-	-
Frontier	15.76	15.03	13.60	11.12	10.20	10.41	10.39	10.35	10.94	9.56	10.78	12.75	9.96	10.03
Virgin America	-	-	-	-	-	-	-	3.14	10.65	9.92	12.21	13.77	14.16	14.49
- sub LCC	9.72	9.20	8.94	8.99	8.73	9.13	9.78	9.91	10.91	9.92	10.85	11.66	11.85	12.57
Alaska	12.08	11.67	11.41	11.43	11.16	11.52	12.25	12.37	12.76	12.06	12.38	13.01	13.33	13.23
Hawaiian	5.64	5.64	7.46	8.37	8.70	8.72	8.78	8.68	10.43	9.03	9.72	11.29	11.45	11.86
Allegiant	-	-	-	-	5.08	7.04	7.67	7.72	7.68	6.97	7.51	8.34	8.53	8.92
- sub Other	9.96	9.74	10.43	10.46	10.46	10.72	11.14	11.03	11.75	10.76	11.16	12.04	12.20	12.27
Base Length of Haul	935	955	966	1,005	1,039	1,061	1,087	1,093	1,115	1,126	1,154	1,170	1,186	1,201



Stage-Length Adjusted System Passenger Yield (2013)

(cents per Revenue Passenger Mile)

